

Cows and Heifers in
Calf to Leonidas 50”+



Online Auction

Closing on
30 May @ 12H00

2024

RS 
AUCTIONEERS

rsauctions.co.za & bidpro.co.za

Reuben 082 374 4388

Suzette 082 411 3419

Annemie 084 840 3346

Raymond 082 339 5900

rsauctioneering@gmail.com



Lot 001

Test your bidding and device

Read the Terms and Conditions

Collection point of delivery

Bloemfontein and 30 kms

Outside Bloemfontein

**BUFFALO RANCH DEDICATES
THIS AUCTION AS A TRIBUTE TO
OUR SON SHAWN
WHO CONTRIBUTED TO - AND WAS PART
OF 34 BUFFALO RANCH AUCTIONS
WE SALUTE A HUMBLE SERVANT
OF THE GAME INDUSTRY**







29⁷/₈"

Duke

SCI 92³/₄"

World No 1 SCI



Lot 002 Duke's Horns, skull and skin to mount as Trophy

Charity Lot – Proceeds will go to **Shawn's Family Household**

We all loved Duke, but probably Shawn the most
Shoulder Mount done by Marakalalo Taxidermy or Buyer can use own
Taxidermist. **Can be exported.**





Lot 003

M	F	Σ
1	0	1

Microchip : 2101134325

Length : L $23\frac{1}{2}$ " R $23\frac{3}{8}$ "

Base : L $12\frac{7}{8}$ " R $12\frac{1}{2}$ "

Tip-Tip : 10"

Age : 4 years old



Young Red Hartbeest Bull
Duke's Son



Lot 004

M	F	Σ
1	0	1

Microchip : 2101130370

Length : L 23 $\frac{3}{4}$ " R 23 $\frac{1}{4}$ "

Base : L 12" R 11 $\frac{3}{4}$ "

Tip-Tip : 11 $\frac{1}{2}$ "

Age : 3.5 years old



Young Red Hartbeest Bull

Duke's Son



Lot 005

M	F	Σ
1	0	1

Microchip : 2101132055

Length : L $22\frac{7}{8}$ " R $22\frac{1}{4}$ "

Base : L 11" R 11"

Tip-Tip : $9\frac{5}{8}$ "

Age : 5 years old



Young Red Hartbeest Bull
Duke's Son



Lot 006

M	F	Σ
1	0	1

Microchip : 4C45513147

Length : L 22½" R 22½"

Base : L 11" R 10⅞"

Tip-Tip : 11"

Age : 5 years old



Young Red Hartebeest Bull
Duke's Son



Lot 007

M	F	Σ
1	0	1

Microchip : 4C45705E0B

Length : L 22½" R 21⅞"

Base : L 10¾" R 10¾"

Tip-Tip : 10½"

Age : 4 years old



Young Red Hartbeest Bull

Duke's Son



Lot 008

M	F	Σ
1	0	1

Microchip : 4A593D6642

Length : L 22½" R 22¼"

Base : L 11¾" R 12"

Tip-Tip : 10"

Age : 6 years old



Young Red Hartbeest Bull

Duke's Son



Lot 009

M	F	Σ
1	4	5

**Starter Package:
Young Duke Son
And
4 x 2 year old
Heifers
(Duke's Grand
Daughters)**



Red Hartbeest Family Group



Lot 010

M	F	Σ
0	4	4

Notes :

4 Young Cows.
Duke daughters or
Grand Daughters.
Running with Duke Jnr II
Available 1st week of
June.

Example of Animals



Duke Jnr



Duke

Red Hartbeest Cows



Lot 011

M	F	Σ
0	4	4

Notes :

4 Young Cows.
Duke daughters or
Grand Daughters.
Running with Duke Jnr II
Available 1st week of
June.

Example of Animals



Duke Jnr



Duke

Red Hartbeest Cows



Lot 012

M	F	Σ
0	4	4

Notes :

4 Young Cows.
Duke daughters or
Grand Daughters.
Running with Duke Jnr II
Available 1st week of
June.

Example of Animals



Duke Jnr



Duke

Red Hartbeest Cows

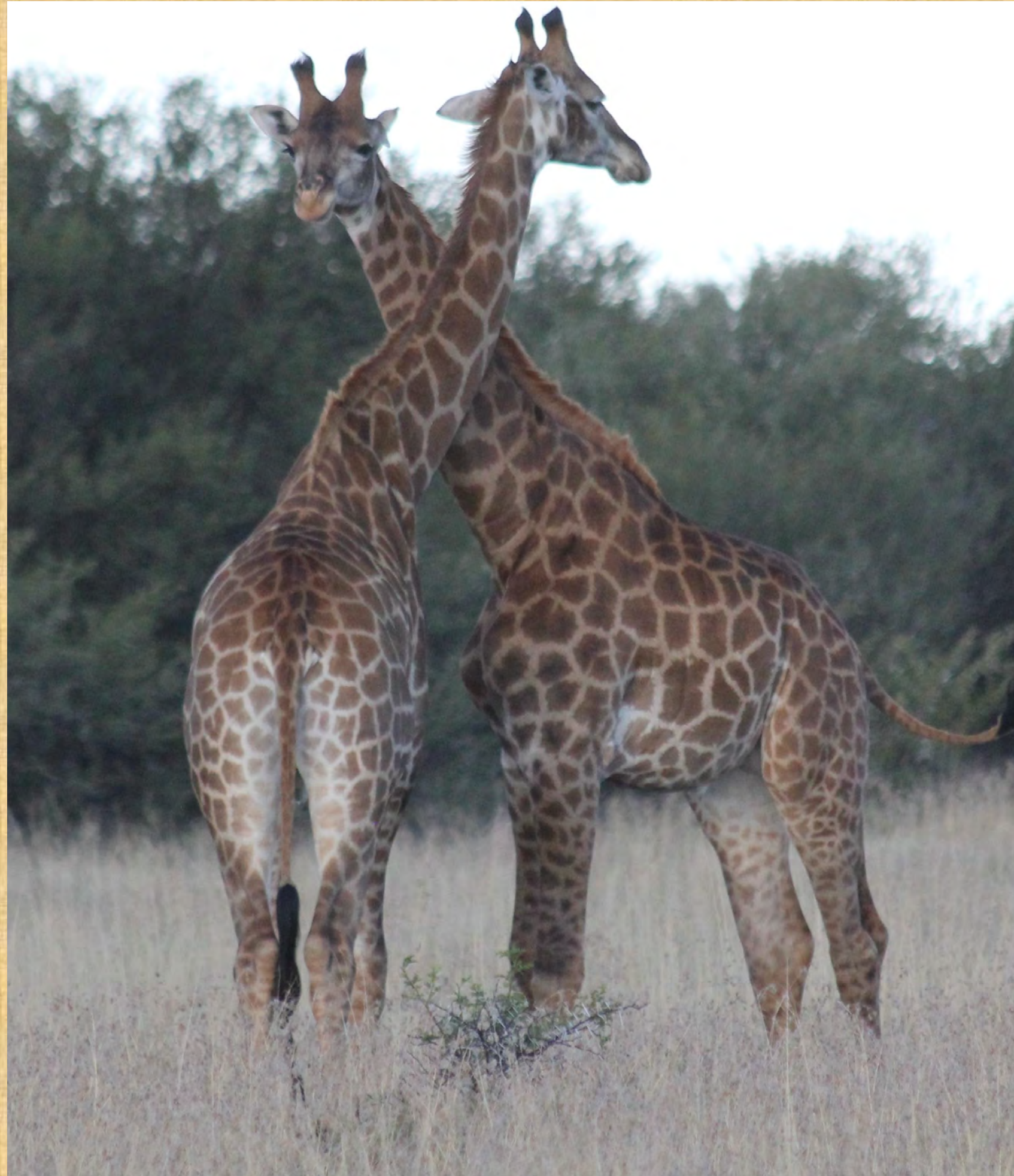
Guest Seller
JA Louw
Leeuwfontein
Theunissen

Lot 013

M	F	Σ
0	1	1

Notes :

1 Adult Cow
Cold adapted.
Available 1st week
of June.



Example of Animals

Giraffe Cow Young Adult

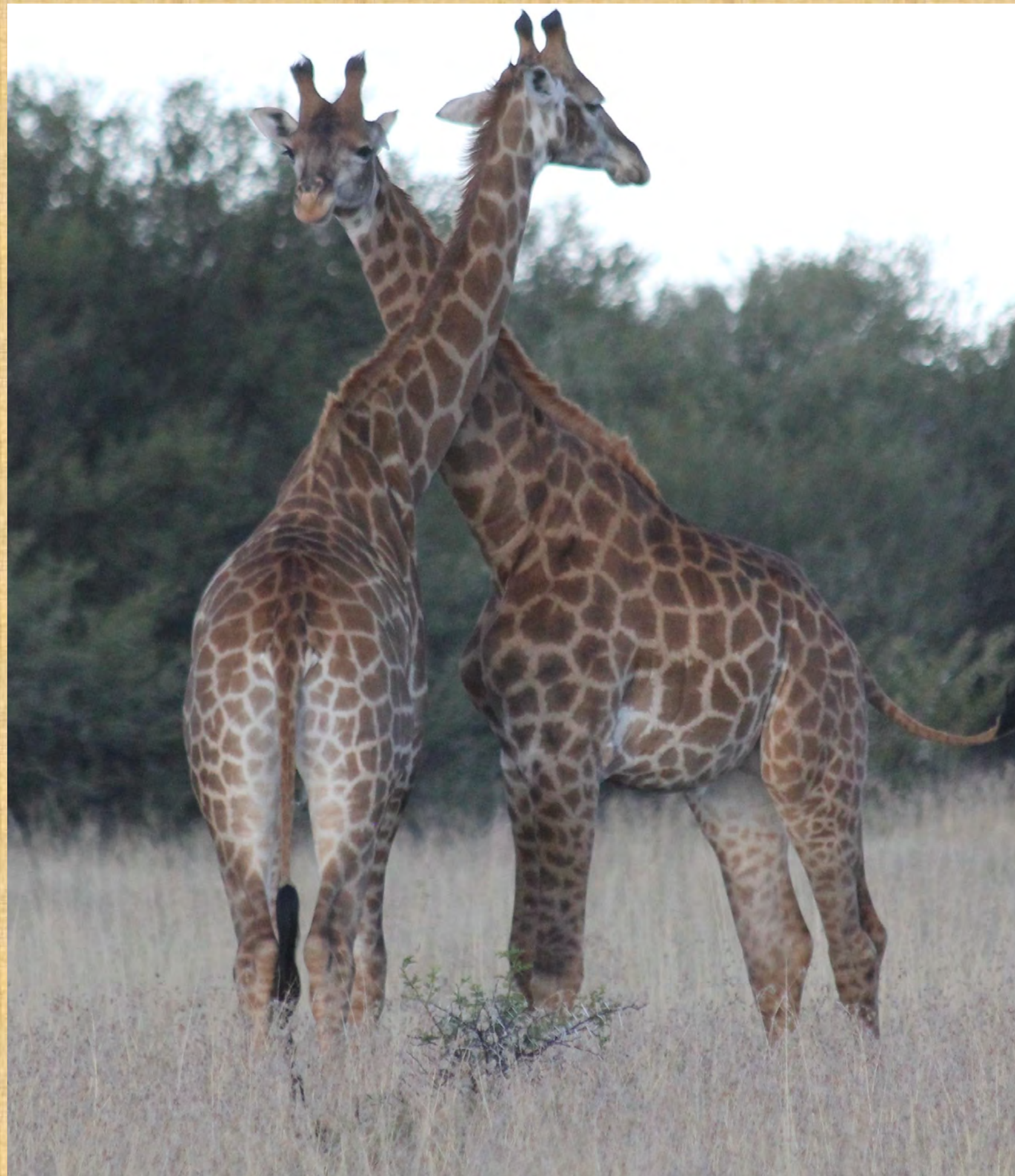
Guest Seller
JA Louw
Leeuwfontein
Theunissen

Lot 014

M	F	Σ
0	1	1

Notes :

1 Adult Cow
Cold adapted.
Available 1st week
of June.



Example of Animals

Giraffe Cow Young Adult



Lot 015

M	F	Σ
1	0	1

Notes :

Young bull.

Cold adapted.

Available 1st week of June.



Young King Wildebeest bull



Lot 016

M	F	Σ
1	0	1

Notes :

Young bull.

Cold adapted.

Available 1st week of June.



Young King Wildebeest Bull



Lot 017

M	F	Σ
1	0	1

Notes :

Young bull.

Cold adapted.

Available 1st week of June.



Young King Wildebeest Bull



Lot 018

M	F	Σ
0	3	3

Notes :

3 Young Females
Available 1st week
of June



Example of Animals

King Wildebeest Females



Lot 019

M	F	Σ
2	0	2

Notes :

2 Bulls.
Cold adapted.
Available 1st week
Of June.



Genetic line



Golden Wildebeest Bulls



Lot 020

M	F	Σ
3	0	3

Notes :

3 Sub-adult bulls.
Cold adapted.
Available 1st week
Of June.



Genetic line



Young Golden Wildebeest Bulls



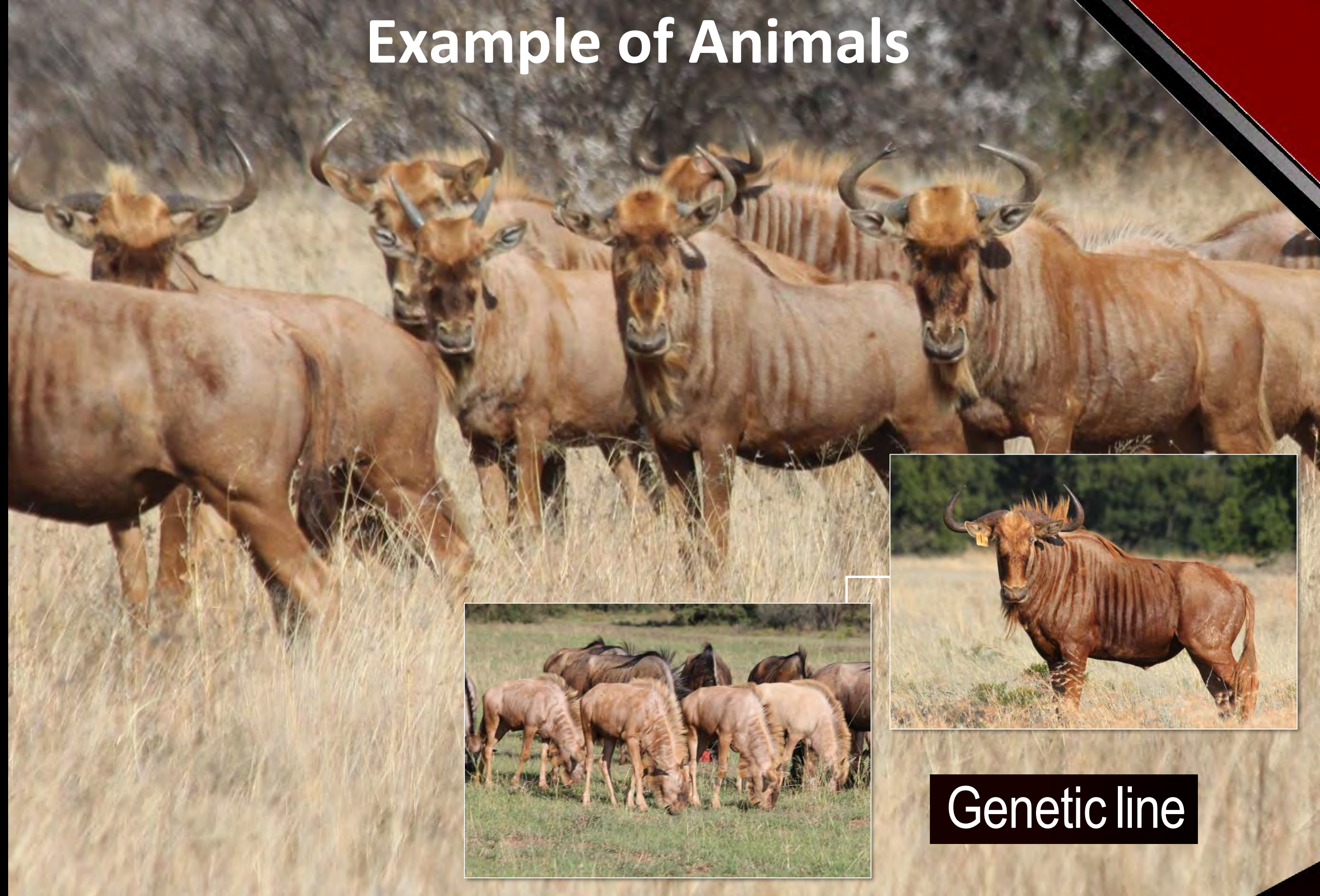
Lot 021

M	F	Σ
0	4	4

Notes :

4 Young cows.
Proven genetics.
Available 1st week
Of June.

Example of Animals



Genetic line

Golden Wildebeest Females



Lot 022

M	F	Σ
1	0	1

Notes :

1 Adult Ram
White Flank ram.
Cold adapted.
Available 1st week
In June.



White Flanked Impala Ram



Lot 023

M	F	Σ
1	0	1

Notes :

1 Young Ram
White Flank ram.
Cold adapted.
Available 1st week
In June.



Genetic line

White Flanked Impala Ram



Lot 024

M	F	Σ
1	2	3

Notes :

2 Adult ewes.
1 Ram Lamb.
Cold adapted.
Available 1st week
of June.



Genetic line

White Flanked Impala Group



Lot 025

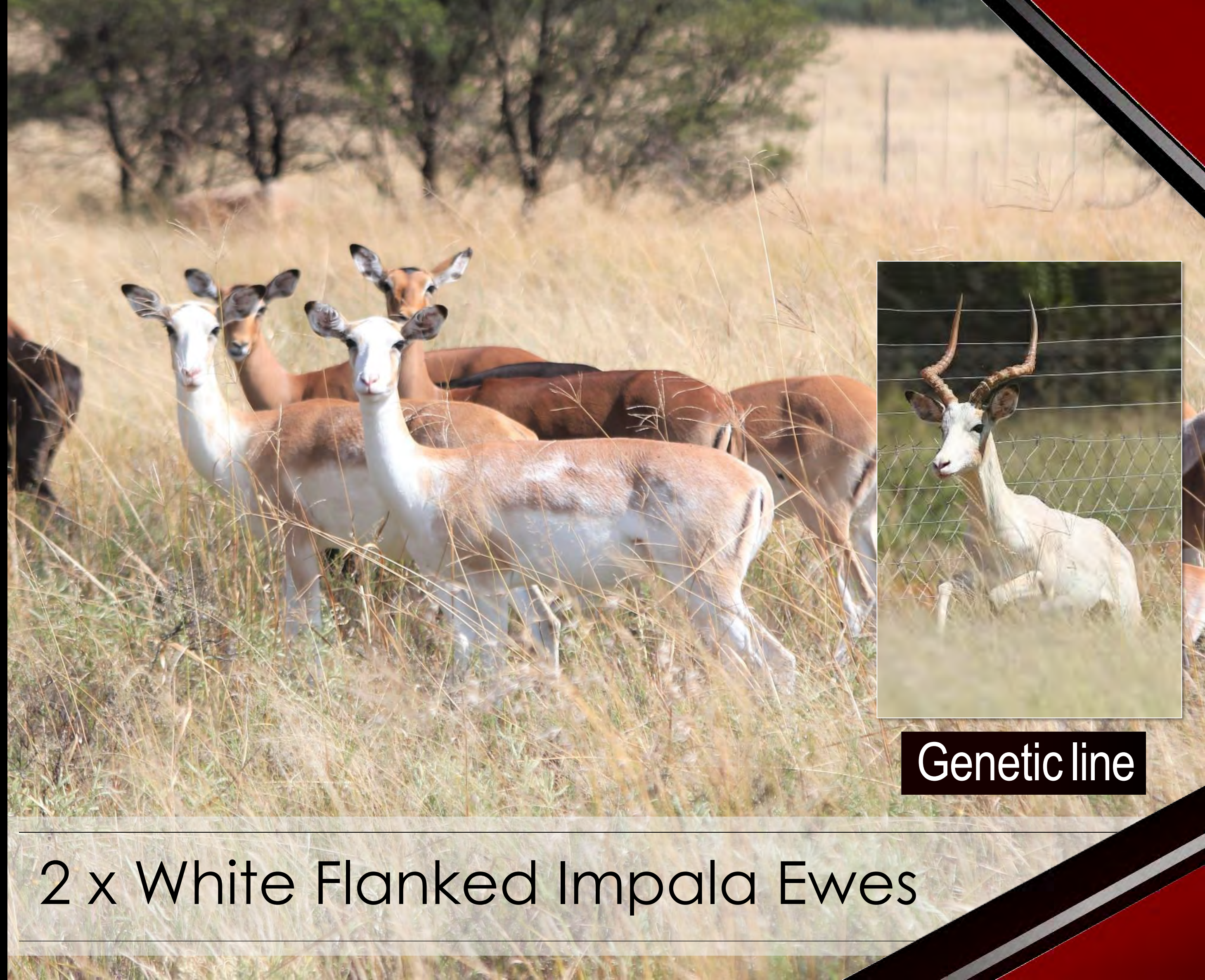
M	F	Σ
	2	2

Notes :

2 Adult ewes.

Cold adapted.

Available 1st week
of June.



Genetic line

2 x White Flanked Impala Ewes



Lot 026

M	F	Σ
1	0	1

Notes :

1 Young White
Flank Impala Ram.
Cold adapted.
Available 1st week
In June.



Genetic line

Young White Flanked Impala Ram



Lot 027

M	F	Σ
1	0	1

Notes :

1 Young White
Flank Impala Ram.
Cold adapted.
Available 1st week In
June.



Genetic line

Young White Flanked Impala Ram



Lot 028

M	F	Σ
18	0	18

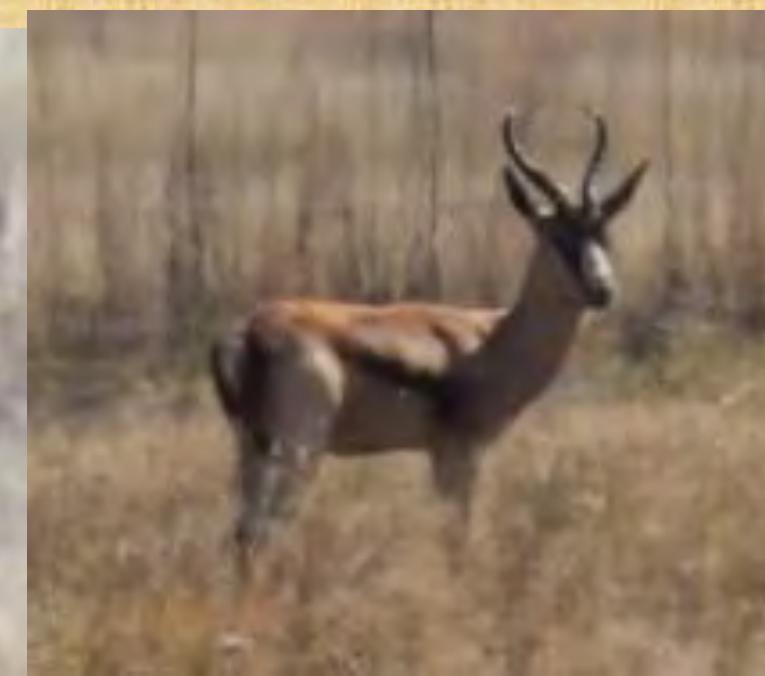
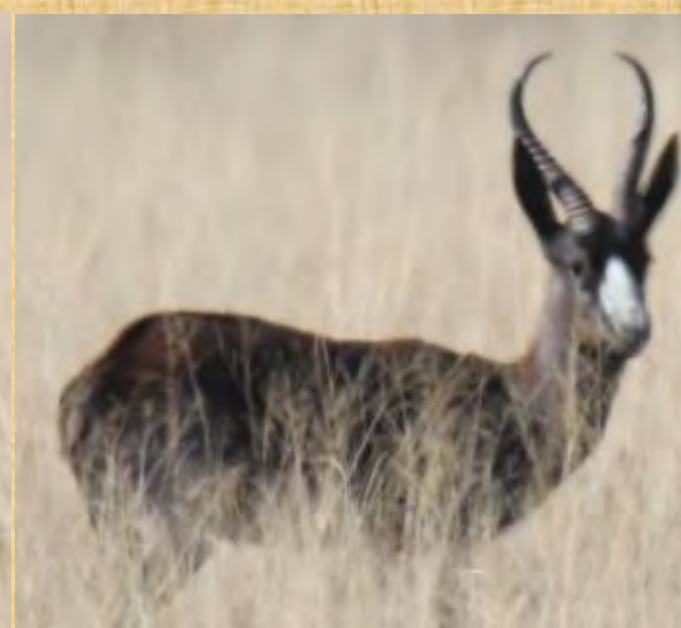
Notes :

4 Copper Rams.

10 Black Rams.

4 Common Rams.

Available 1st week
of June.



Springbuck Copper Black Common Rams



Lot 029

M	F	Σ
1	0	1

Notes :

1 Young adult ram.
Cold adapted.
Available 1st week of
June.



Saddleback Blesbuck Ram



Lot 030

M	F	Σ
1	0	1

Notes :

1 Young adult ram.
Cold adapted.
Available 1st week of
June.



Saddleback Blesbuck Ram



Lot 031

M	F	Σ
5	0	5

Notes :

5 Young adult ram.
Cold adapted.
Available 1st week of
June.

Example of the Animals



Yellow Blesbuck Rams



Lot 032

M	F	Σ
0	4	4

Notes :

4 Young adult ewes.
Cold adapted.
Available 1st week of
June.

Example of the Animals



Yellow Blesbuck Ewes



Lot 033

M	F	Σ
1	1	2

Notes :

Young Zebra
Small Camp Tame
Available 1st week
of June.



Young Burchell Zebra



Lot 034

M	F	Σ
1	0	1

Notes :

Adult bull.

Cold adapted.

Available 1st week of June.



Nyala Breeding/Hunting Bull



Lot 035

M	F	Σ
1	0	1

Notes :

Young Nyala Bull.
Cold adapted.
Available 1st week of
June.



Nyala Young Bull/Bred from 30"+ Bull



Lot 036

M	F	Σ
1	0	1

Notes :

Adult bull.

Cold adapted.

Available 1st week of June.



Nyala Young Bull/Bred from 30"+ Bull

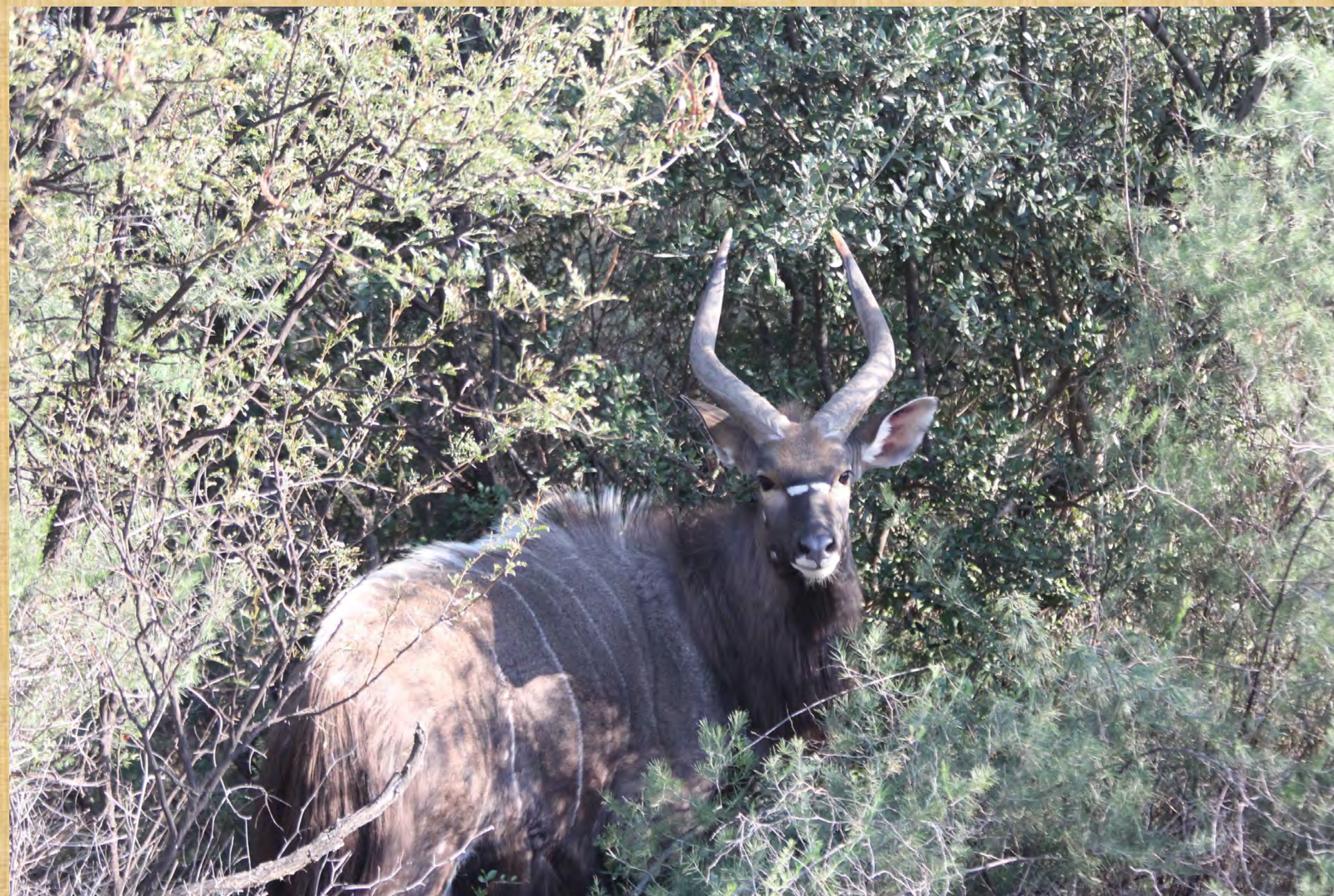


Lot 037

M	F	Σ
1	0	1

Notes :

Young Nyala Bull.
Cold adapted.
Available 1st week of
June.



Nyala Young Bull/Bred from 30"+ Bull



Lot 038

M	F	Σ
1	0	1

Notes :

Young Nyala Bull.

Cold adapted.

Available 1st week of June.



Nyala Young Bull/Bred from 30''+ Bull



Lot 039

M	F	Σ
1	0	1

Notes :

Young Nyala Bull.
Cold adapted.
Available 1st week of
June.



Nyala Young Bull/Bred from 30"+ Bull



Lot 042

M	F	Σ
1	0	1

Notes :

Adult bull.

Cold adapted.

Available 1st week of June.



Nyala Young Bull/Bred from 30"+ Bull



Lot 043

M	F	Σ
0	3	3

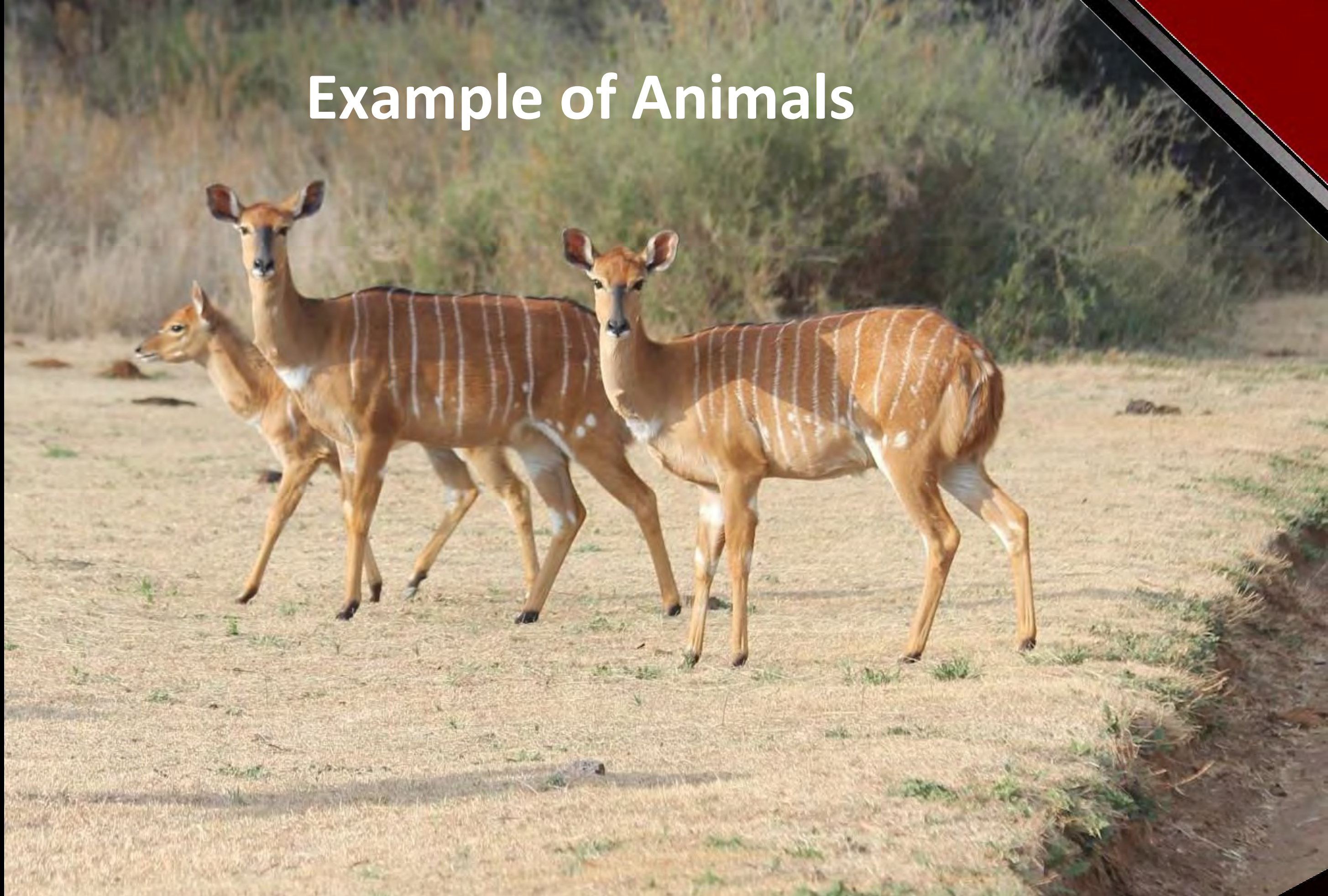
Notes :

3 x Nyala Ewes

Cold adapted.

Available 1st week
of June.

Example of Animals



Nyala Ewes – Adult/Sub-Adult

Bred from 30"+ Bull



Lot 044

M	F	Σ
0	3	3

Notes :

3 x Nyala Ewes
Cold adapted.

Available 1st week
of June.

Example of Animals



Nyala Ewes – Adult/Sub-Adult

Bred from 30"+ Bull



Lot 045

M	F	Σ
0	3	3

Notes :

3 x Nyala Ewes
Cold adapted.

Available 1st week
of June.

Example of Animals



Nyala Ewes – Adult/Sub-Adult

Bred from 30"+ Bull



Lot 046

M	F	Σ
4	0	4

Notes :

Cold adapted.
Available 1st week of
June.



Genetic line

4 Lechwe Young Rams
Bred from 31"+ Rams



Lot 047

M	F	Σ
6	0	6

Notes :

Cold adapted.
Available 1st week of
June.



Genetic line

6 Lechwe Young Rams
Bred from 31"+ Rams



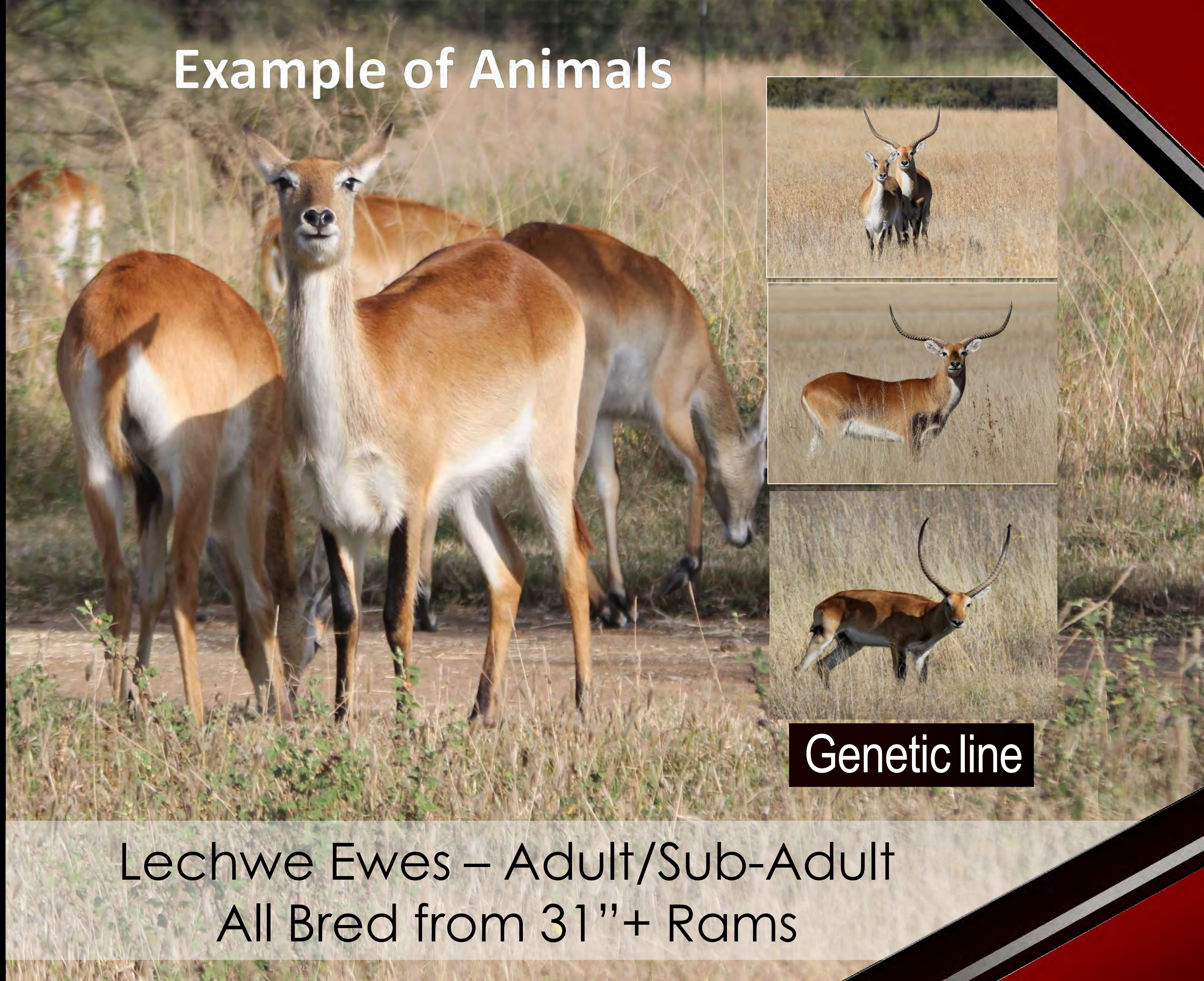
Lot 048

M	F	Σ
0	4	4

Notes :

2 Adult Ewes and
2 Younger Ewes
Cold adapted.
Available 1st week of
June.

Example of Animals



Genetic line

Lechwe Ewes – Adult/Sub-Adult
All Bred from 31"+ Rams



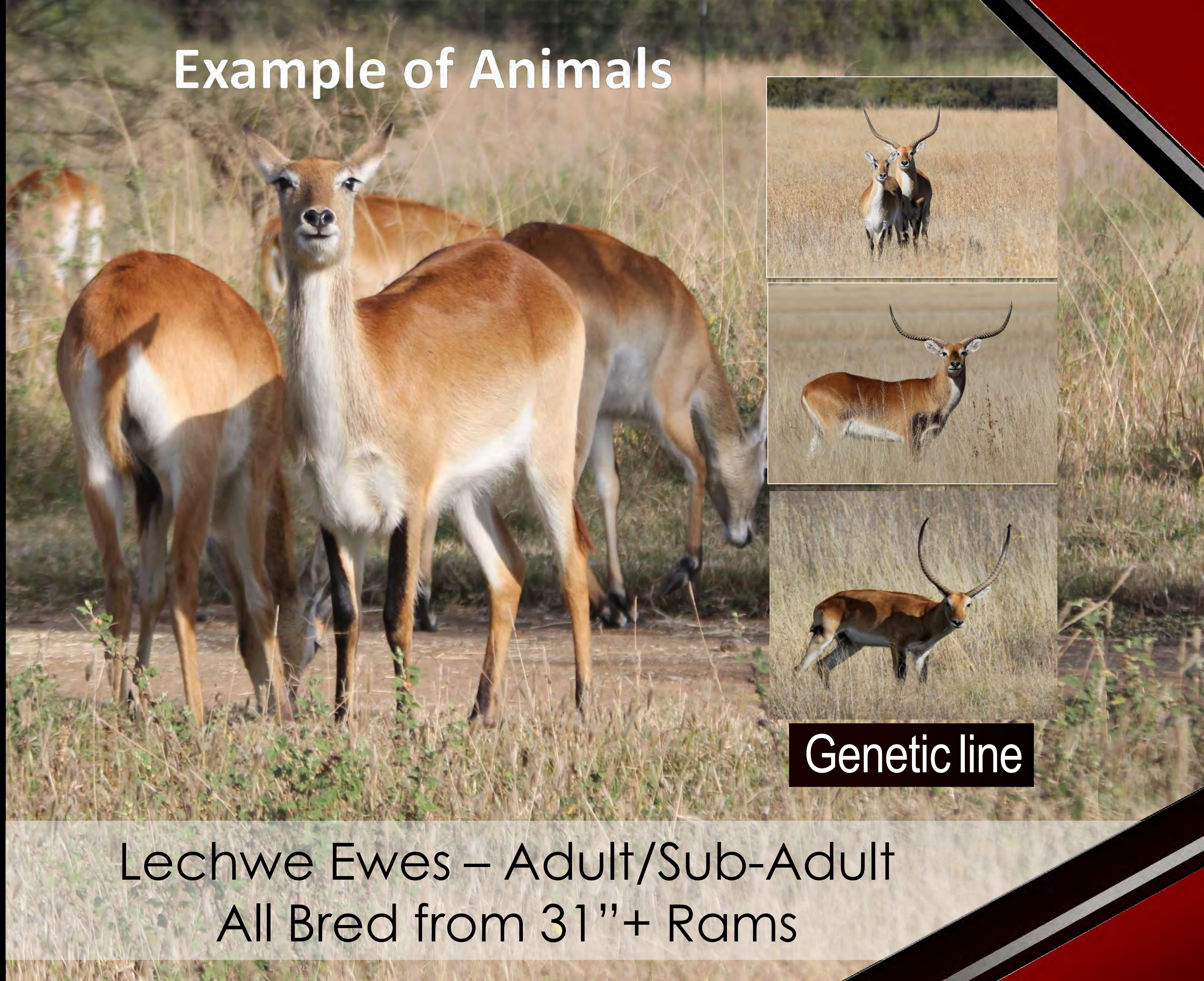
Lot 049

M	F	Σ
0	4	4

Notes :

2 Adult Ewes and
2 Younger Ewes
Cold adapted.
Available 1st week of
June.

Example of Animals



Genetic line

Lechwe Ewes – Adult/Sub-Adult
All Bred from 31"+ Rams



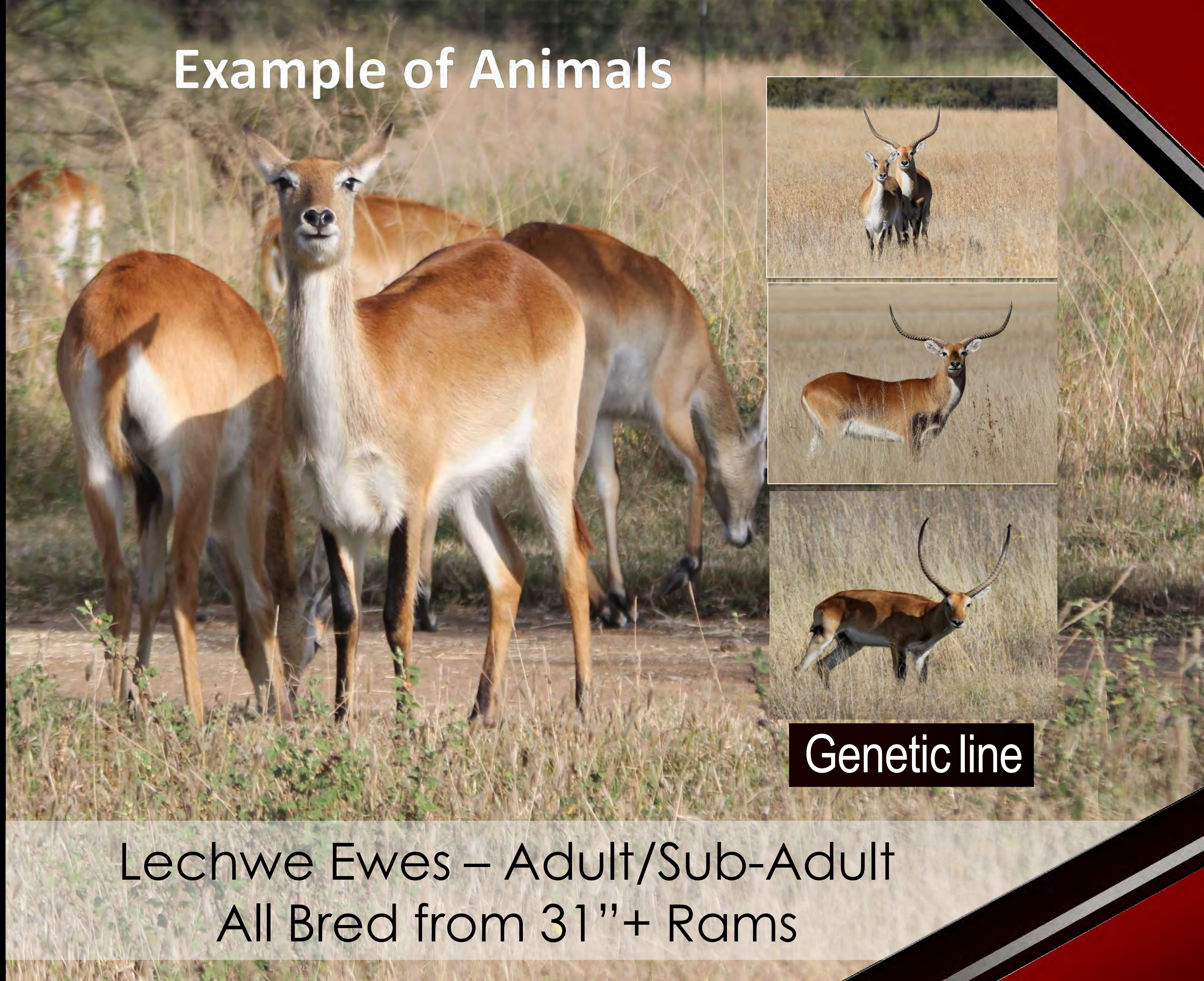
Lot 050

M	F	Σ
0	4	4

Notes :

2 Adult Ewes and
2 Younger Ewes
Cold adapted.
Available 1st week of
June.

Example of Animals



Genetic line

Lechwe Ewes – Adult/Sub-Adult
All Bred from 31"+ Rams



Lot 051

M	F	Σ
1	0	1

Length : L 41 $\frac{1}{4}$ " R 39 $\frac{3}{4}$ "

Base : 10 $\frac{1}{2}$ "

Rings : 30

Ring-Tip : 13"

Tip-Tip : 16 $\frac{1}{2}$ "

Age : Adult



41 $\frac{1}{4}$ " Sable Pure Zambian



Lot 052

M	F	Σ
1	0	1

Length : L $38\frac{1}{2}$ " R $38\frac{1}{2}$ "

Base : $9\frac{3}{4}$ "

Tip-Tip : $12\frac{1}{2}$ "



$38\frac{1}{2}$ " Sable Bull



Lot 053

M	F	Σ
1	0	1

Length : L 38" R 37³/₄"

Base : 9¹/₂"

Tip-Tip : 15³/₄"



38" Sable Bull



Lot 054

M	F	Σ
1	0	1

Length : L $37\frac{3}{4}$ " R $37\frac{1}{2}$ "

Base : L 9" R $9\frac{1}{2}$ "

Rings : 37

Ring-Tip : 9"

Tip-Tip : $14\frac{1}{2}$ "

Age : 3.5 yrs +



Sire 47"

$37\frac{3}{4}$ " Sable Bull x Zambian



Lot 055A

M	F	Σ
1	0	1

Length : L 36" R 35½"

Base : 10¼"

Tip-Tip : 10½"



36" Sable Bull



Lot 055B

M	F	Σ
1	0	1

Length : L 38"

Right Broken tip

Base : 9½"



38" Sable Bull



Lot 056

M	F	Σ
1	0	1

Length : L $32\frac{3}{4}$ " R $32\frac{1}{2}$ "

Base : L $9\frac{1}{4}$ " R $9\frac{1}{2}$ "

Rings : 27

Ring-Tip : $9\frac{1}{4}$ "

Tip-Tip : 14"

Age : 3 yrs +



Sire 47"

$32\frac{3}{4}$ " Sable Bull x Zambian



Lot 057

M	F	Σ
1	0	1

Length : L $32\frac{3}{4}$ " R $32\frac{1}{2}$ "

Base : L 9" R $9\frac{1}{2}$ "

Rings : 26

Ring-Tip : $8\frac{1}{8}$ "

Tip-Tip : 12"

Age : 3 yrs +



Sire 47"

$32\frac{3}{4}$ " Sable Bull x Zambian



Lot 058

M	F	Σ
12	0	12

Notes :

Young Bulls x Zambian
4 x (Approx. 1) Year old
8 x (>1 – 2) Years old
Available 1st week of
June



12 Young Sable Bulls

Start of Sable Mixed Group

The cow and calf combination in each Lot is the exact animal to deliver to buyer.

The other age combinations can be any animal in the example photos as placed in the lots to be loaded during capture.

Example of Animals in Lots

Adult



2 – 3
Yrs



1 Yr





Lot 059

M	F	Σ
0	4	4

Females x Zambian

1 x Cow 5 yrs old (blue tag) with male calf at foot

1 x Young Adult Cow 3 yrs old

1 x 2-3 yrs old heifer

1 x 1-2 yr old heifer

Available 1st week of June

Blue Tag Cow 5+ yrs plus Male Calf



Plus Combination of Samples



Seller's Veterinarian selects animals to be loaded
Breeding Bull Pure Zambian

Sable Mixed Group



Lot 060

M	F	Σ
0	4	4

Females x Zambian

1 x Cow 5 yrs old (pink tag) with female calf at foot

1 x Young Adult Cow 3 yrs old

1 x 2-3 yrs old heifer

1 x 1-2 yr old heifer

Available 1st week of June

Pink Tag Cow 5+ yrs plus Female Calf



Plus Combination of Samples



Seller's Veterinarian selects animals to be loaded

Breeding Bull Pure Zambian

Sable Mixed Group



Lot 061

M	F	Σ
0	4	4

Females x Zambian

1 x Cow 7 yrs old (white tag) with male calf at foot

1 x Young Adult Cow 3 yrs old

1 x 2-3 yrs old heifer

1 x 1-2 yr old heifer

Available 1st week of June

White Tag Cow 7+ yrs plus Male Calf

Plus Combination of Examples



Plus Combination of Samples



Seller's Veterinarian selects animals to be loaded
Breeding Bull Pure Zambian

Sable Mixed Group



Lot 062

M	F	Σ
0	4	4

Females x Zambian

1 x Cow 6 yrs old (purple tag) with female calf at foot

1 x Young Adult Cow 3 yrs old

1 x 2-3 yrs old heifer

1 x 1-2 yr old heifer

Available 1st week of June

Purple Tag Cow 6+ yrs plus Female Calf

Plus Combination of Examples



Plus Combination of Samples



Seller's Veterinarian selects animals to be loaded

Breeding Bull Pure Zambian

Sable Mixed Group



Lot 063

M	F	Σ
0	4	4

Females x Zambian

1 x Cow 7 yrs old (red tag)
with male calf at foot

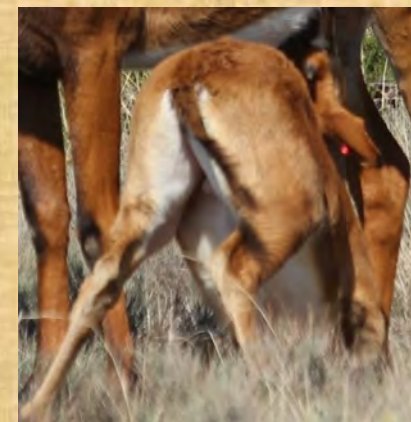
1 x Young Adult Cow 3 yrs
old

1 x 2-3 yrs old heifer

1 x 1-2 yr old heifer

Available 1st week of June

Red Tag Cow 7+ yrs plus Male Calf



Plus Combination of Examples



Plus Combination of Samples



Seller's Veterinarian selects animals to be loaded

Breeding Bull Pure Zambian

Sable Mixed Group



Lot 064A

M	F	Σ
1	0	1

Notes :

Cold adapted.

Available 1st week of June



Fallow Deer Trophy



Lot 064B

M	F	Σ
1	0	1

Notes :

Cold adapted.

Available 1st week of
June



Fallow Deer Trophy



Lot 065

M	F	Σ
1	2	3

Notes :

1 Young Male

2 Breeding Females

Cold adapted.

Available 1st week of
June



Fallow Deer Family Group

Start of the Buffalo Hunting Bulls

**Already tested will be ready
to move in approx. 2 weeks**



Information

Number – 2

Tag – None

Microchip – 7110352E1B

Age at auction – 7 yrs

Bloodline – Buffalo Ranch

Sire –

Dam –

Measurements

RW – $42\frac{5}{8}$ "

(Soft) Boss – 15"

(Hard) Boss – 14"

Tip – Tip

(Horn Length) – $86\frac{1}{2}$ "

SCI Soft – $116\frac{1}{2}$ "

SCI Hard – $114\frac{1}{2}$ "

Tip Width – 29"

Lot 066



M	F	Σ
1	0	1



Information

Number – 10

Tag – None

Microchip – 7110410A42

Age at auction – 7 yrs

Bloodline – Buffalo Ranch

Sire –

Dam –

Measurements

RW – $41\frac{7}{8}$ "

(Soft) Boss – $13\frac{1}{2}$ "

(Hard) Boss – $11\frac{1}{2}$ "

Tip – Tip

(Horn Length) – $82\frac{3}{4}$ "

SCI Soft – $109\frac{3}{4}$ "

SCI Hard – $105\frac{3}{4}$ "

Tip Width – $25\frac{1}{4}$ "

Lot 067

M	F	Σ
1	0	1





Information

Number – 4

Tag – None

Microchip – 7110411375

Age at auction – 6 yrs

Bloodline – Buffalo Ranch

Sire –

Dam –

Measurements

RW – 42½"

(Soft) Boss – 15"

(Hard) Boss – 13½"

Tip – Tip

(Horn Length) – 88¾"

SCI Soft – 118¾"

SCI Hard – 115¾"

Tip Width – 26½"

Lot 068

M	F	Σ
1	0	1



Hunttable next year



Information

Number – 7

Tag – None

Microchip – 711040612A

Age at auction – 6 yrs

Bloodline – Buffalo Ranch

Sire –

Dam –

Measurements

RW – $42\frac{1}{8}$ "

(Soft) Boss – 15"

(Hard) Boss – 14"

Tip – Tip

(Horn Length) – $90\frac{5}{8}$ "

SCI Soft – $120\frac{5}{8}$ "

SCI Hard – $118\frac{5}{8}$ "

Tip Width – 21"

Lot 069

M	F	Σ
1	0	1



Hunttable next year



Information

Number – 1

Tag – None

Microchip – 7110410903

Age at auction – 6 yrs

Bloodline – Buffalo Ranch

Sire –

Dam –

Measurements

RW – 40 $\frac{1}{4}$ "

(Soft) Boss – 15"

(Hard) Boss – 14"

Tip – Tip

(Horn Length) – 88 $\frac{5}{8}$ "

SCI Soft – 118 $\frac{5}{8}$ "

SCI Hard – 116 $\frac{5}{8}$ "

Tip Width – 27"

Lot 070

M	F	Σ
1	0	1

Hunttable next year





Information

Number – 11

Tag – None

Microchip – 7110407823

Age at auction – 6.5 yrs

Bloodline – Buffalo Ranch

Sire –

Dam –

Measurements

RW – 38⁵/₈"

(Soft) Boss – 15¹/₄"

(Hard) Boss – 13"

Tip – Tip

(Horn Length) – 89⁵/₈"

SCI Soft – 119⁵/₈"

SCI Hard – 115⁵/₈"

Tip Width – 18¹/₂"

Lot 071

M	F	Σ
1	0	1



Hunttable in 6 - 8 months

Guest Seller
JA Louw
Leeuwfontein
Theunissen

Information

Number – 1

Tag –

Microchip – 2101150238

Age at auction – 7 yrs

Bloodline –

Sire –

Dam –

Measurements

RW – 39³/₄"

(Soft) Boss – 13³/₄"

(Hard) Boss – 11"

Tip – Tip

(Horn Length) – 84"

SCI Soft – 111¹/₂"

SCI Hard – 106"

Tip Width - 22"

Lot 072

M	F	Σ
1	0	1

Guest Seller
JA Louw
Leeuwfontein
Theunissen



Guest Seller
JA Louw
Leeuwfontein
Theunissen

Lot 073

M	F	Σ
1	0	1

Guest Seller
JA Louw
Leeuwfontein
Theunissen

Information

Number – 3
Tag –
Microchip – 945000001913329
Age at auction – 6 - 7 yrs
Bloodline –
Sire –
Dam –

Measurements

RW – $39\frac{3}{4}$ "
(Soft) Boss – 14"
(Hard) Boss – 10"
Tip – Tip
(Horn Length) – $83\frac{3}{4}$ "
SCI Soft – $111\frac{3}{4}$ "
SCI Hard – $103\frac{3}{4}$ "
Tip Width – 23"



Start of the Breeding Bulls

Already tested will be ready
to move in approx. 2 weeks

Breeding Bulls

**View the videos of the boss and teeth (age)
of the bulls under each Lot on the
Online Auction Platform**

We have experienced that, over the past 25 years, some of our buffalo bulls are still growing (horn size) up to 8 years of age (late bloomers).

Based on statistics, we make a prediction for the bulls in this catalogue.

We captured bulls that seemed big and were pleasantly surprised when we matched their age to their microchips.

They were still young so buyers will be pleasantly surprised when these bulls reach their full potential.



Pablo 51½"



Paternal brother
Jelani 50"+



Maternal brother
Lexis 50"+



Sire: Killer 45"+



Dam: Lady 38"



Son of Lady
Zuri 51" +



Grandsire:
Y 17



Granddam:
Madam 38"+



Grandsire:
Y 17

Granddam:
Blue Yellow 5

Line Breeding Guarantees High Standard

Spread RW 51½" Boss 14" Hornlength (Tip to Tip) 91" Tip Width 40" SCI 119"

Tested: Available immediately



Spread RW 51½" Boss 14" Hornlength (Tip to Tip) 91" Tip Width 40" SCI 119"

Spread RW 51½" Boss 14" Hornlength (Tip to Tip) 91" Tip Width 40" SCI 119"





Information

Name – Pablo

Tag – None

Microchip – 711035297E

Age at auction – 9 yrs

Bloodline – Buffalo Ranch

Sire – Killer

Dam – Lady

Measurements

RW – 51½"

Boss – 14"

Tip – Tip

(Horn Length) – 91"

SCI – 119"

Tip Width – 40"

Fertility test available

Already tested: available
immediately

Lot 074

M	F	Σ
1	0	1





Information

Number – 9

Tag – None

Microchip – 711041030C

Age at auction – 6 yrs 2 mths

Bloodline – Buffalo Ranch

Sire – Maximus

Dam – Zara

Measurements

RW – 46⁵/₈"

(Soft) Boss – 15"

(Hard) Boss – 13"

Tip – Tip

(Horn Length) – 96¹/₂"

SCI Soft – 126¹/₂"

SCI Hard – 122¹/₂"

Tip Width – 28"

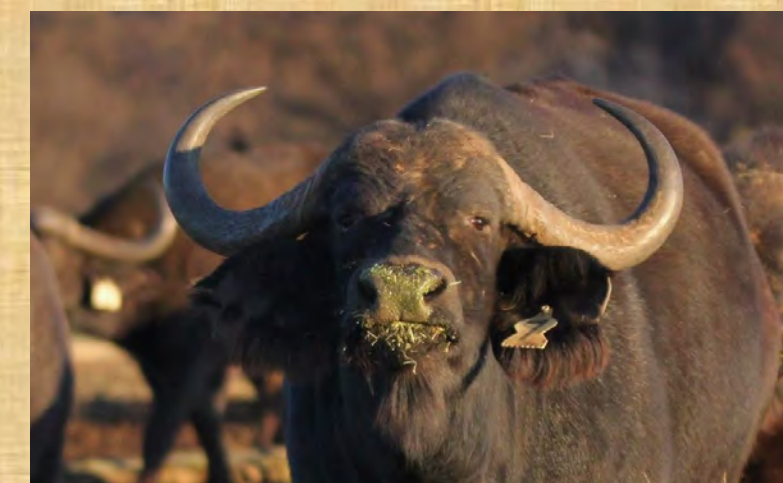
Lot 075

M	F	Σ
1	0	1



Sire Maximus

Dam Zara



Expectation at 8 yrs old 49/50" RW SCI 130"+



Information

Number – 3

Tag – None

Microchip – 7110411F08

Age at auction – 6.5 yrs

Bloodline – Buffalo Ranch

Sire – Maximus

Dam – Kendall

Measurements

RW – $45\frac{3}{8}$ "

(Soft) Boss – $15\frac{1}{2}$ "

(Hard) Boss – 14"

Tip – Tip

(Horn Length) – $87\frac{3}{8}$ "

SCI Soft – $118\frac{3}{8}$ "

SCI Hard – $115\frac{3}{8}$ "

Tip Width – $38\frac{1}{2}$ "

Lot 076

M	F	Σ
1	0	1



Sire Maximus



Dam Kendall



Expectation at 8 yrs old 47/48" RW SCI 125"+

Guest Seller
JA Louw
Leeuwfontein
Theunissen

Information

Number – 2
Tag –
Microchip – 2101150220
Age at auction – 6 yrs
Bloodline –
Sire –
Dam –

Measurements

RW – 44³/₄”
(Soft) Boss – 19”
(Hard) Boss – 16”
Tip – Tip
(Horn Length) – 102”
SCI Soft – 140”
SCI Hard – 134”
Tip Width – 22¹/₂”

Lot 077

M	F	Σ
1	0	1

Guest Seller
JA Louw
Leeuwfontein
Theunissen



**Note the SCI of 140/134 of this Bull
and still soft and growing**



Information

Number – 6
Tag – None
Microchip – 4C445E6E47
Age at auction – 5.1 yrs
Bloodline – Buffalo Ranch
Sire – Lexis
Dam – Stella

Measurements

RW – $43\frac{5}{8}$ "
(Soft) Boss – 14"
(Hard) Boss – 12"
Tip – Tip
(Horn Length) – $87\frac{3}{4}$ "
SCI Soft – $115\frac{3}{4}$ "
SCI Hard – $111\frac{3}{4}$ "
Tip Width – $30\frac{1}{4}$ "

Lot 078

M	F	Σ
1	0	1



Sire Lexis



Dam Stella



Only 5 years old, 2 - 3 years growth left, expected 47"+



Information

Number – 8

Tag – None

Microchip – 4C456E3619

Age at auction – 5.2 yrs

Bloodline – Buffalo Ranch

Sire – Lexis

Dam – Lee Anne

Measurements

RW – 41 $\frac{1}{4}$ "

(Soft) Boss – 13"

(Hard) Boss – 11 $\frac{1}{2}$ "

Tip – Tip

(Horn Length) – 90 $\frac{3}{4}$ "

SCI Soft – 116 $\frac{3}{4}$ "

SCI Hard – 113 $\frac{3}{4}$ "

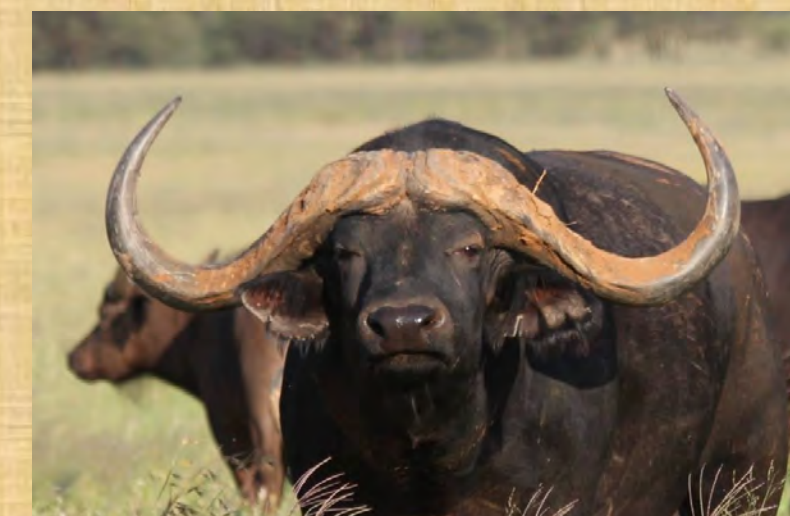
Tip Width – 22"

Lot 079

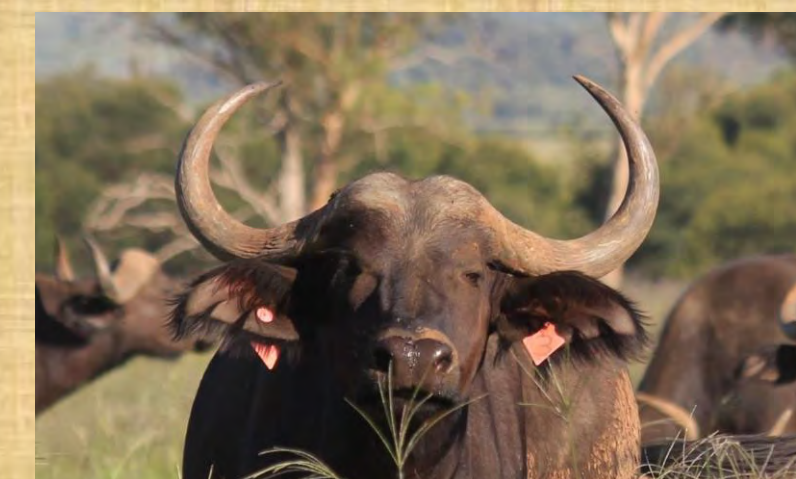
M	F	Σ
1	0	1



Sire Lexis



Dam Lee Anne



Only 5 years old, 2 -3 years growth left, expected 45"+



Lot 080

M	F	Σ
1	0	1

Information

Number – 5

Tag – None

Microchip – 4C45587349

Age at auction – 6 yrs

Bloodline – Buffalo Ranch

Sire – Lexis

Dam – Bessie

Measurements

RW – 40½"

(Soft) Boss – 15"

(Hard) Boss – 13"

Tip – Tip

(Horn Length) – 83½"

SCI Soft – 113½"

SCI Hard – 109½"

Tip Width – 29¾"



Sire Lexis



Dam Bessie



Only 5.2 years old, 2 -3 years growth left, expected 44"+



Lot 081

M	F	Σ
1	0	1

Information

Number – 12
Tag – None
Microchip – 4C457C6B6A
Age at auction – 5.1 yrs
Bloodline – Buffalo Ranch
Sire – Lexis
Dam – Zambi

Measurements

RW – $38\frac{3}{4}$ "
(Soft) Boss – 15"
(Hard) Boss – 13"
Tip – Tip
(Horn Length) – $78\frac{3}{4}$ "
SCI Soft – $108\frac{3}{4}$ "
SCI Hard – $104\frac{3}{4}$ "
Tip Width – $26\frac{3}{4}$ "



Sire Lexis



Dam Zambi



Only 5 years old, 2 -3 years growth left, expected 43"+

Lot 082

M	F	Σ
10	0	10

Guest Seller
JA Louw
Leeuwfontein
Theunissen

No	Spread Inches	Boss Inches	Hornlength Inches	Tip Width Inches
6	29	9	74¼	10
8	27½	7	63¾	16½
5	27⅞	7	65	13¼
7	25½	7	63	14
11	24½	6	55	15¾
14	24¼	6	53½	21¼
12	23½		39¼	20
9	23¼		39	19¼
13	22⅝	6	53½	14¾
10	19⅞		39	19¼



Age: From 1 year + to 3 years old.
Please scroll to the right on the online platform for full photos.
Already bled for testing, available for movement 2-3 weeks.

Start of the Cows

Cows with calves

Heifers

Heifers with Calves

Cows and Heifers not in Calf

(Can stay on Buffalo Ranch until Certified)

Will be tested immediately after auction



Information

Name – Jackie

Tag – GO2

Microchip – 7110291743

Age at auction – 11 yrs

Bloodline – Buffalo Ranch

Sire – Savannah

Dam – Y4

In Calf To – Leonidas

Measurements

RW – 35 $\frac{7}{8}$ "

(Soft) Boss – 7"

(Hard) Boss – 5"

Tip – Tip

(Horn Length) – 65 $\frac{1}{8}$ "

SCI Soft – 79 $\frac{1}{8}$ "

SCI Hard – 75 $\frac{1}{8}$ "

Tip Width – 30 $\frac{1}{8}$ "

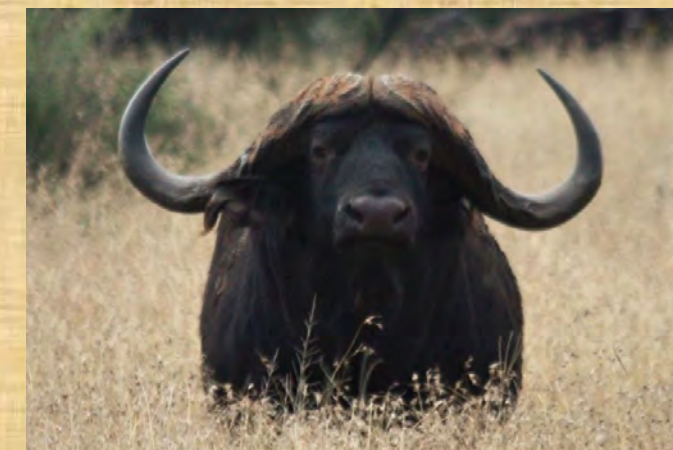
Lot 083

M	F	Σ
0	1	1

JACKIE



Sire Savannah



Dam Yellow 4



In calf to Leonidas 50"+





Information

Name — Phoebe

Tag — GO3

Microchip — 4C3B636A20

Age at auction — 11 yrs

Bloodline — Buffalo Ranch

Sire — Savannah

Dam — W4

In Calf To — Leonidas

Measurements

RW — 29½"

(Soft) Boss — 8½"

(Hard) Boss — 5½"

Tip — Tip

(Horn Length) — 61½"

SCI Soft — 78½"

SCI Hard — 72½"

Tip Width — 20"

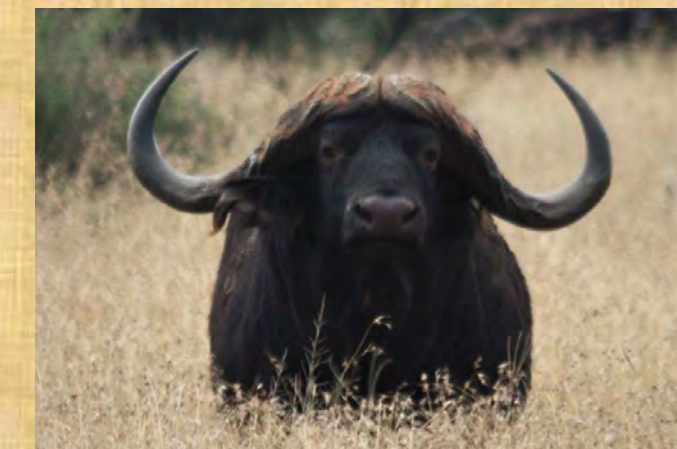
Lot 084

M	F	Σ
0	1	1

PHOEBE



Sire Savannah



Dam Sally



In calf to Leonidas 50''+



Lot 085

M	F	Σ
0	1	1

FIONA

Sire Flash

Information

Name — Fiona
Tag — B2
Microchip — 4C47773F24
Age at auction — 9 yrs
Bloodline — Buffalo Ranch
Sire — Flash Drop
Dam — RG4
In Calf To — Leonidas

Measurements

Roland Ward — 31 $\frac{5}{8}$ "
(Soft) Boss — 8"
(Hard) Boss — 6"
Tip — Tip
(Horn Length) — 68"
SCI Soft — 84"
SCI Hard — 80"
Tipwidth — 20 $\frac{1}{2}$ "



Dam RG Heifer



In calf to Leonidas 50"+



Information

Name — Follies
Tag — Pink 7
Microchip — 4C4419473F
Age at auction — 7.2 yrs
Bloodline — Buffalo Ranch
Sire — Max
Dam — Amelia
In Calf To — Leonidas

Measurements

RW — $32\frac{3}{4}$ "
(Soft) Boss — 9"
(Hard) Boss — $7\frac{1}{2}$ "
Tip — Tip
(Horn Length) — $73\frac{5}{8}$ "
SCI Soft — $91\frac{5}{8}$ "
SCI Hard — $88\frac{5}{8}$ "
Tip Width — $19\frac{1}{8}$ "

Lot 086

M	F	Σ
0	1	1

FOLLIES

Sire Max



Dam Amelia Heifer



In calf to Leonidas 50"+



Information

Name — Addy
Tag — W2
Microchip — 4C43757948
Age at auction — 6 yrs
Bloodline — Buffalo Ranch
Sire — Caesar
Dam — Willow
In Calf To — Leonidas

Measurements

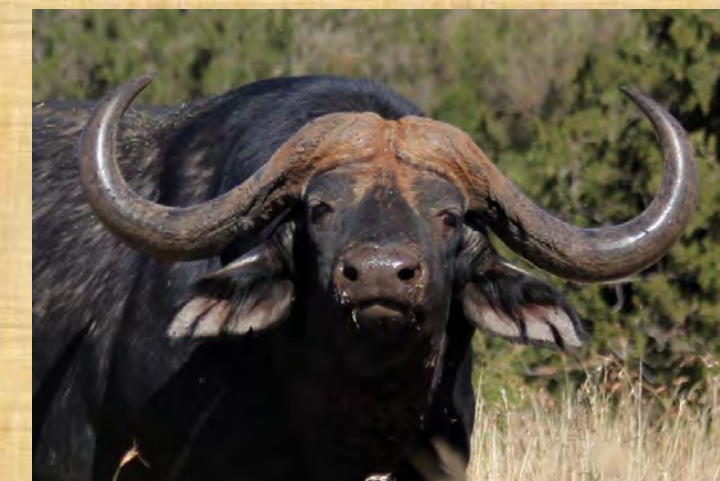
RW — 32½"
(Soft) Boss — 7"
(Hard) Boss — 5"
Tip — Tip
(Horn Length) — 71"
SCI Soft — 85"
SCI Hard — 81"
Tip Width — 17"

Lot 087

M	F	Σ
0	1+1	1

ADDY

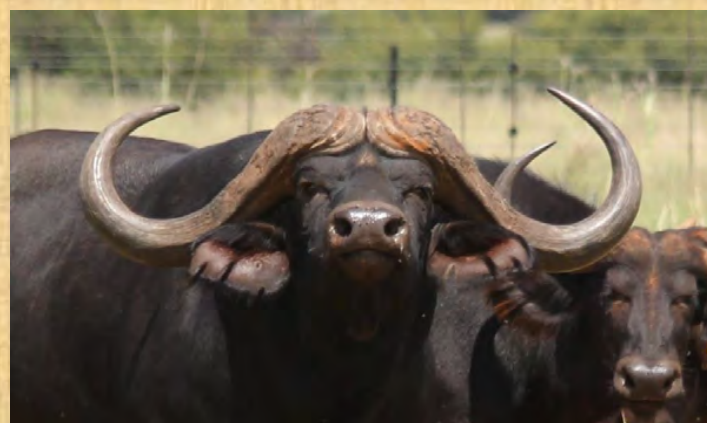
Sire Caesar



Dam Willow



Batista female calf (3 mths) at foot



**Might be in calf to Leonidas 50"+
Batista female calf (3 mths) at foot**





Information

Name — Scarlet
Tag — 07
Microchip — 4C43774037
Age at auction — 6 yrs
Bloodline — Buffalo Ranch
Sire — Caesar
Dam — Sally
In Calf To — Leonidas

Measurements

RW — 28⁵/₈"
(Soft) Boss — 7"
(Hard) Boss — 5"
Tip — Tip
(Horn Length) — 63¹/₂"
SCI Soft — 77 ¹/₂"
SCI Hard — 73 ¹/₂"
Tip Width — 14"

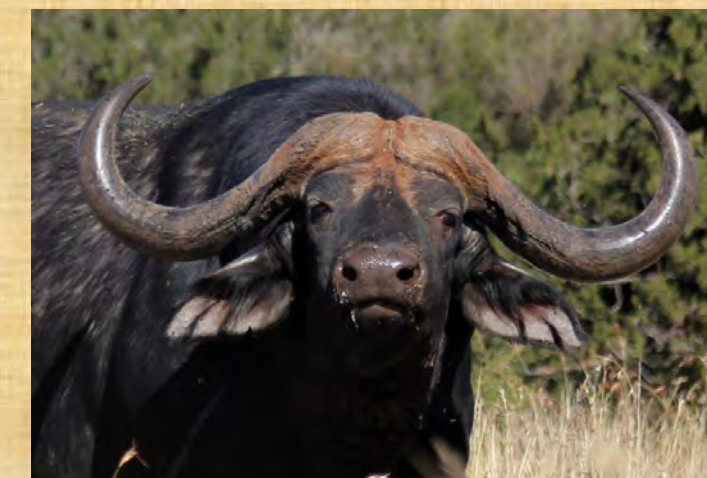
Lot 088

M	F	Σ
0	1	1

SCARLET



Sire Caesar



Dam Sally



In calf to Leonidas 50"+



Information

Name — Ariana

Tag — Y 5

Microchip — 4C40487410

Age at auction — 5 yrs

Bloodline — Buffalo Ranch

Sire — Maximus/Caesar

Dam — Samara

In Calf To — Leonidas

Measurements

RW — 31 $\frac{7}{8}$ "

(Soft) Boss — 7"

(Hard) Boss — 6"

Tip — Tip

(Horn Length) — 70"

SCI Soft — 84"

SCI Hard — 82"

Tip Width — 20"

Lot 089

M	F	Σ
0	1	1

ARLANA



Sire Caesar or Maximus



Dam Samara



In calf to Leonidas 50"+



Information

Name — Carolien
Tag — W5
Microchip — 4C4407713C
Age at auction — 4.8 yrs
Bloodline — Buffalo Ranch
Sire — Caesar
Dam — Flattie
In Calf To — Leonidas

Measurements

RW — 28½"
(Soft) Boss — 6"
(Hard) Boss — 5"
Tip — Tip
(Horn Length) — 62½"
SCI Soft — 74½"
SCI Hard — 72½"
Tip Width — 19"

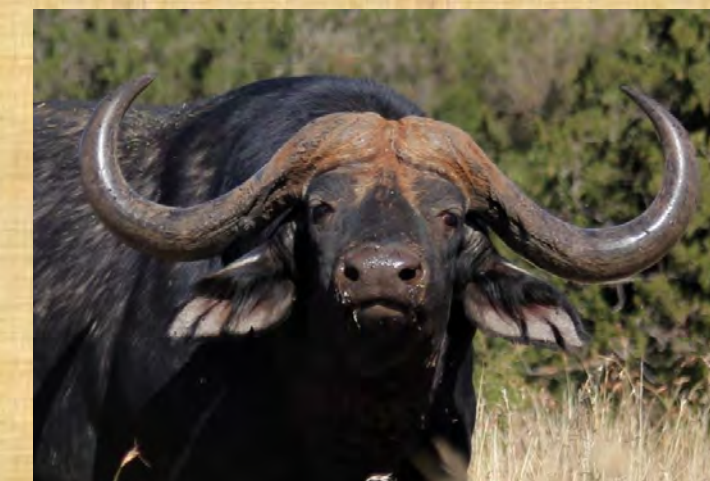
Lot 090

M	F	Σ
0	1	1

CAROLIEN



Sire Caesar



Dam Flattie



In calf to Leonidas 50''+



Information

Name – Johna
Tag – Purple 2
Microchip – 4C4569404C
Age at auction – 4.2 yrs
Bloodline – Buffalo Ranch
Sire – Batista
Dam – Sally
In Calf To – Leonidas

Measurements

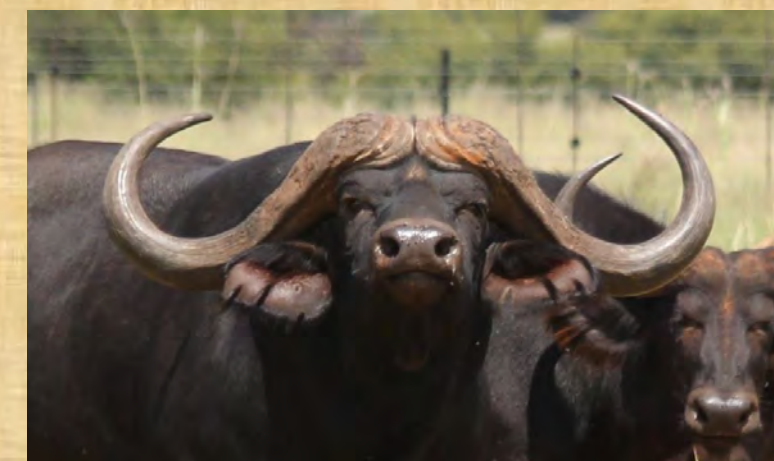
RW – 28 $\frac{5}{8}$ "
(Soft) Boss – 7"
(Hard) Boss – 5"
Tip – Tip
(Horn Length) – 67"
SCI Soft – 81"
SCI Hard – 77"
Tip Width – 15"

Lot 091

M	F	Σ
0	1	1

JOHNA

Sire Batista



Dam Sally



In calf to Leonidas 50"+



Information

Name — Bianca II
Tag — Purple 4
Microchip — 4C46104840
Age at auction — 4 yrs
Bloodline — Buffalo Ranch
Sire — Batista
Dam — Bianca I
In Calf To — Leonidas

Measurements

RW — 29 $\frac{1}{8}$ "
(Soft) Boss — 7"
(Hard) Boss — 5 $\frac{1}{2}$ "
Tip — Tip
(Horn Length) — 68"
SCI Soft — 82"
SCI Hard — 79"
Tip Width — 14"

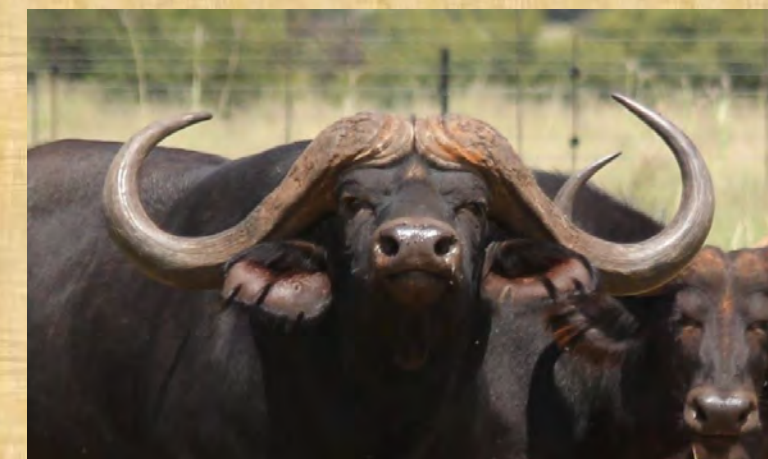
Lot 092

M	F	Σ
0	1	1

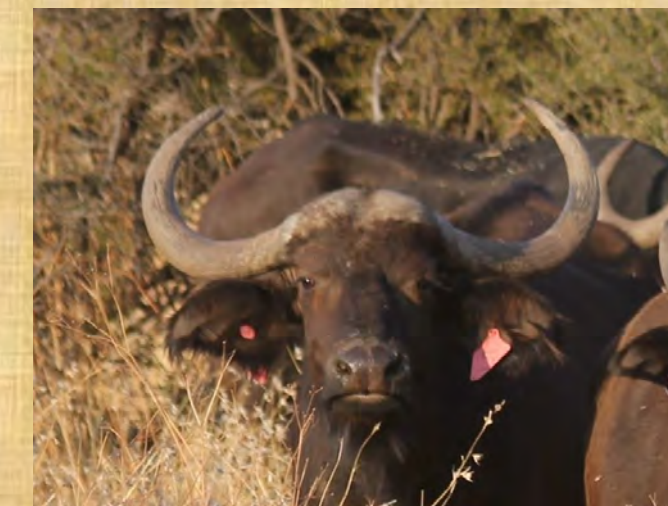
BLANCA II



Sire Batista



Dam Bianca



In calf to Leonidas 50"+





Information

Name — Marcha
Tag — W/B5
Microchip — 4C46472414
Age at auction — 3.9 yrs
Bloodline — Buffalo Ranch
Sire — Batista
Dam — Helga
In Calf To — Leonidas

Measurements

RW — 29 $\frac{7}{8}$ "
(Soft) Boss — 7"
(Hard) Boss — 5"
Tip — Tip
(Horn Length) — 70"
SCI Soft — 84"
SCI Hard — 80"
Tip Width — 15 $\frac{1}{2}$ "

Lot 093

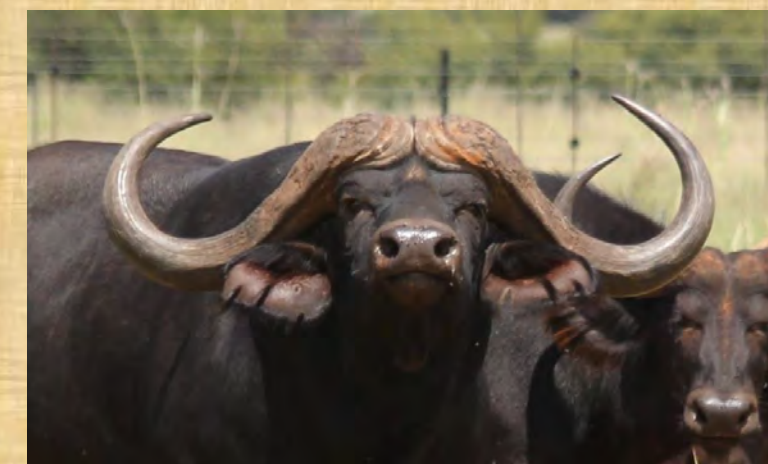
M	F	Σ
0	1	1

MARCHA

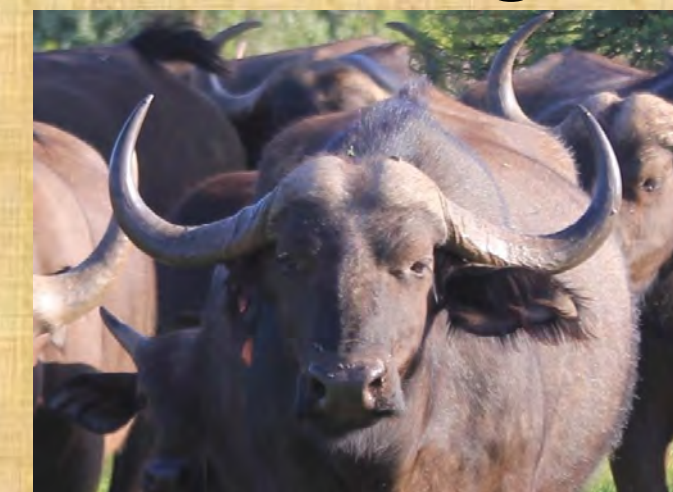


In calf to Leonidas 50"+

Sire Batista



Dam Helga





Information

Name – Phoebe II

Tag – W7

Microchip – 4C4040143D

Age at auction – 3.9 yrs

Bloodline – Buffalo Ranch

Sire – Batista

Dam – Phoebe I

In Calf To – Leonidas

Measurements

RW – 28 $\frac{1}{8}$ "

(Soft) Boss – 7"

(Hard) Boss – 5"

Tip – Tip

(Horn Length) – 63"

SCI Soft – 77"

SCI Hard – 73"

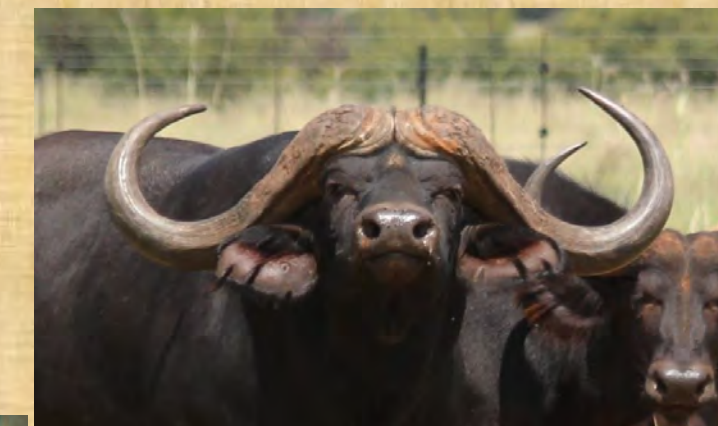
Tip Width – 17"

Lot 094

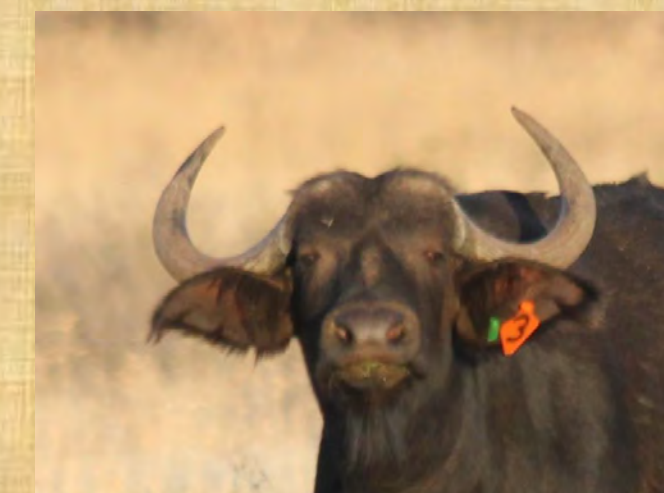
M	F	Σ
0	1	1

PHOEBE II

Sire Batista



Dam Phoebe I



In calf to Leonidas 50"+



Information

Name – Bibi II

Tag – Purple 5

Microchip – 7110406B47

Age at auction – 3.9 yrs

Bloodline – Buffalo Ranch

Sire – Batista

Dam – Bibi I

In Calf To – Leonidas

Measurements

RW – 26½"

(Soft) Boss – 7"

(Hard) Boss – 5"

Tip – Tip

(Horn Length) – 61"

SCI Soft – 75"

SCI Hard – 71"

Tip Width – 16"

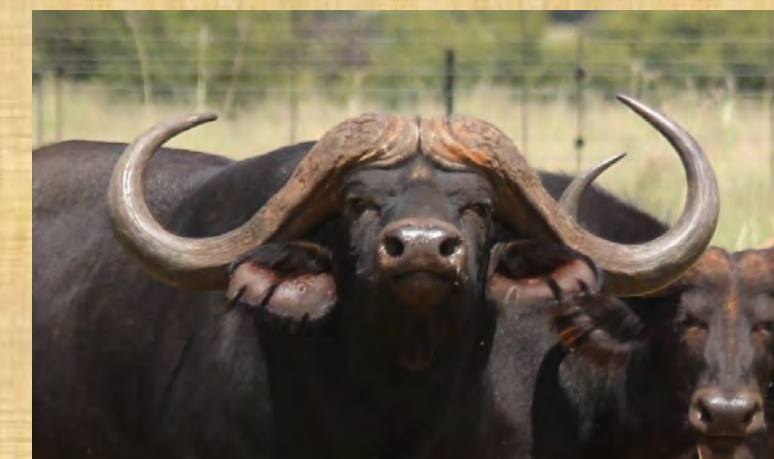
Lot 095

M	F	Σ
0	1	1

BIBI II



Sire Batista



Dam Bibi I



In calf to Leonidas 50"+



Information

Name — Elaine
Tag — G2
Microchip — 4C474A0B77
Age at auction — 8.5 yrs
Bloodline — Buffalo Ranch
Sire — Ceasar
Dam — Samara
In Calf To — Leonidas

Measurements

RW — 31 $\frac{3}{4}$ "
(Soft) Boss — 7"
(Hard) Boss — 6"
Tip — Tip
(Horn Length) — 67"
SCI Soft — 81"
SCI Hard — 79"
Tip Width — 17 $\frac{3}{4}$ "

Lot 096

M	F	Σ
+1	1	1

ELAINE



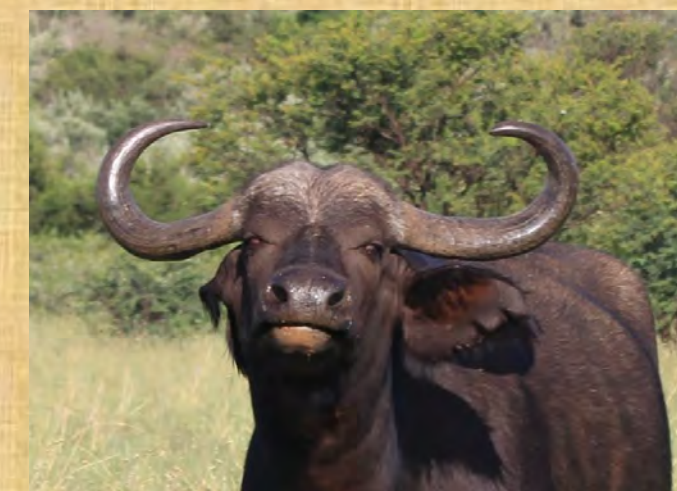
Batista male calf (2 mths) at foot

Not in calf. Can stay on Buffalo Ranch until certified pregnant by Leonidas

Sire Caesar



Dam Samara





Information

Name — Adina
Tag — G3
Microchip — 4C44143079
Age at auction — 7.2 yrs
Bloodline — Buffalo Ranch
Sire — Caesar
Dam — Sally
In Calf To — Leonidas

Measurements

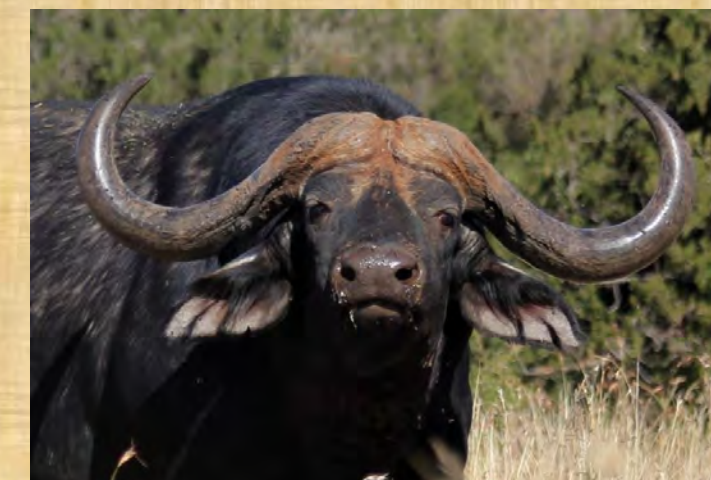
RW — 30½"
(Soft) Boss — 7"
(Hard) Boss — 5"
Tip — Tip
(Horn Length) — 70"
SCI Soft — 84"
SCI Hard — 80"
Tip Width — 14¾"

Lot 097

M	F	Σ
0	1+1	1

ADINA

Sire Caesar



Dam Sally



Batista female calf (3 mths) at foot
Not in calf. Can stay on Buffalo Ranch
until certified pregnant by Leonidas





Information

Name – Bix

Tag – W3

Microchip – 4C44182F17

Age at auction – 6.2 yrs

Bloodline – Buffalo Ranch

Sire – Caesar

Dam – Helena

In Calf To – Leonidas

Measurements

RW – 28³/₈”

(Soft) Boss – 7”

(Hard) Boss – 5”

Tip – Tip

(Horn Length) – 63”

SCI Soft – 77”

SCI Hard – 73”

Tip Width – 16”

Lot 098

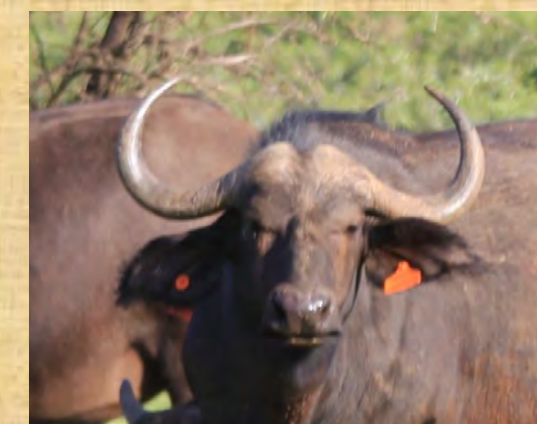
BLX

M	F	Σ
0	1	1

Sire Caesar



Dam Helena as Heifer



Not in calf. Can stay on Buffalo Ranch until certified pregnant by Leonidas





Information

Name – Empangeni

Tag – Y3

Microchip – 4C40380B45

Age at auction – 4.9 yrs

Bloodline – Buffalo Ranch

Sire – Maximus

Dam – Bibi I

In Calf To – Leonidas

Measurements

RW – 31"

(Soft) Boss – 7"

(Hard) Boss – 6"

Tip – Tip

(Horn Length) – 68"

SCI Soft – 82"

SCI Hard – 80"

Tip Width – 18½"

Lot 099

M	F	Σ
0	1	1

EMPANGENI



Sire Maximus



Dam Bibi Heifer



Not in calf. Can stay on Buffalo Ranch until certified pregnant by Leonidas





**THANK
YOU**

...for your generous support!